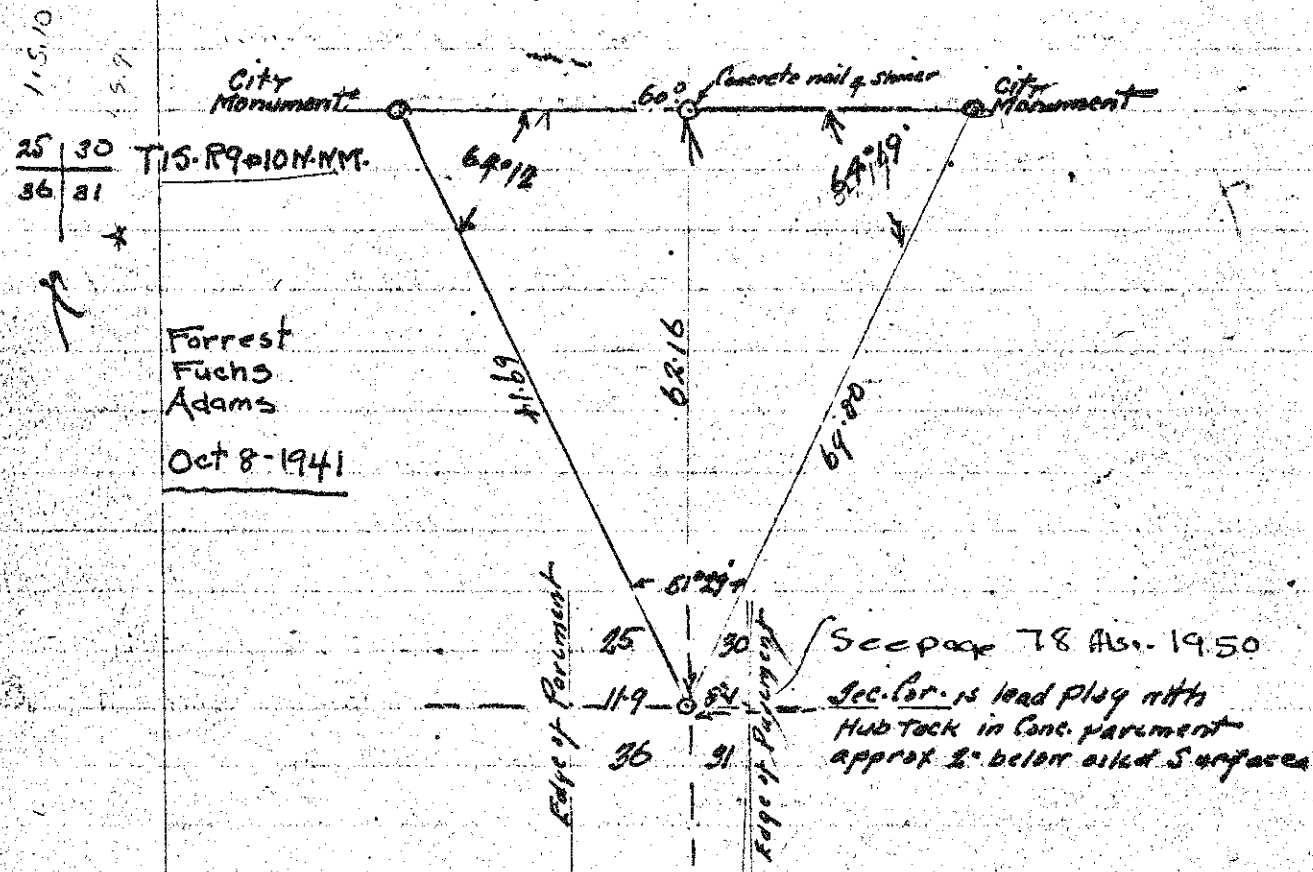


305 136
2
of

T.1.N.R.10.W found old Stake & Rock and Two BT 64' spruce
T.1.S.R.10.W old Bearing in Record S48°W. 49.5 - T3 S48°W 46.5
94" fir Stump is there Marks covered by Hemlock
tree. Made New witness. 14" spruce bears
N 52° E 57.1
48" Hem N 42° 30' W 63 ft 36" Hem on stump
N 77° 30' W 28.2

In presence of W.E. Anderson
Louie Terwilliger
Jack Graham

Nov. 1945.



1/2 Cor Between Sec 24-25 T.3.N.R.10.W
2" I.P. pipe driven flush with ground from which 9.48" Burnt Stump
bear East 108.6 a hub in a large Burnt Stump bears S 6° 30' E 90'
W.E. Anderson on Jan - 4. W.E. Anderson & F.L. Smith found the
L. Terwilliger - 6-46 original I.P. pipe for 1/2 Cor set by Jackson 1903
Jack Graham which bears - as follows for

1/6 Cor S.E. corner of NE 1/4 of Sec 31 T.2.S.R.9.W 36" Hem N 67.45° E 8.2 Harry R Kern
1/6 Cor S.W. corner of NE 1/4 of Sec 31 T.2.S.R.9.W 25" Hem N 73° W 11.1
1/6 Cor S.W. corner of NE 1/4 of Sec 31 T.2.S.R.9.W 30" Hem S 33° 30' W 6.1 Harry R Kern
1/6 Cor S.W. corner of NE 1/4 of Sec 31 T.2.S.R.9.W N 55.45° E 20.0
tence base 3.3' 4.9 ft
4.9 ft
4.9 ft
OLD 2" pipe set
Anderson bears
and West 2'
1" pipe

1/4 30 31

West between Sec 30-31 from Cor 29-30-31-32 T.2.S.R.9.W. 11
found old Bearing Tree Marked 24" Marked N 87° E 21 ft
30" " " S 8° 30' W 28.8 ft

Henry Cook, Ralph Blum
Frank Mills, Everett Wells

East Between 29 32 1/4 Cor Reset Cor from old BT which
was uprooted and marked T.2.S.R.9.W see also
10" Hem N 10° E 5.7 ft THIS BOOK P. 29 in 1923
24" " S 64° W 4.4 ft Henry Cook, Everett Wells

1/4 Cor Set 1.P. from which 8" fir bears N 39° W 55°
Between 18" Hem N 68° W 105° old BT. N 68° W 103 ft
Russell Forest
T.3.S.R.9.W A.H. Gulstrom, Bernie Dwigans, 1948.
Refer to Page 69 of this Book Brass cap & cement 1971 gum

1/6 Cor 16" fir S 29° E 18.4' 1948
N.W. corner of Rock Russell Forest, A.H. Gulstrom, Bernie Dwigans
S.E. 1/4 of S.E. 1/4 (also see p 50 for same corner)
Sec 29, T.3.S.R.9.W

1/6 Cor July 13-1948 1.P. old BT. 60" fir Stump S 6° 00' W 68.9 ft
Met. New witness power pole bear East 104 ft
Anderson Terwilliger Graham

1/6 Cor 16" spruce 94.50 8.80 ft H.P. Kern - 16" Hem N 30° W 23.9 ft
16" Hem N 88° 14.80 ft 16" spruce S 10° 30' W 24.3 ft

1/6 Cor of the 16" spruce 94.50 8.80 ft
1/6 Cor of the 16" Hem N 88° E 14.80 ft
1/6 Cor of the 16" Hem N 88° E 14.80 ft
T.2.S.R.9.W

1/6 Cor of the 16" spruce 94.50 8.80 ft
1/6 Cor of the 16" Hem N 88° E 14.80 ft
1/6 Cor of the 16" Hem N 88° E 14.80 ft
T.2.S.R.9.W